

The Transformation of our Hospitals

Improving care for the people
of Dorset (and Hampshire!)

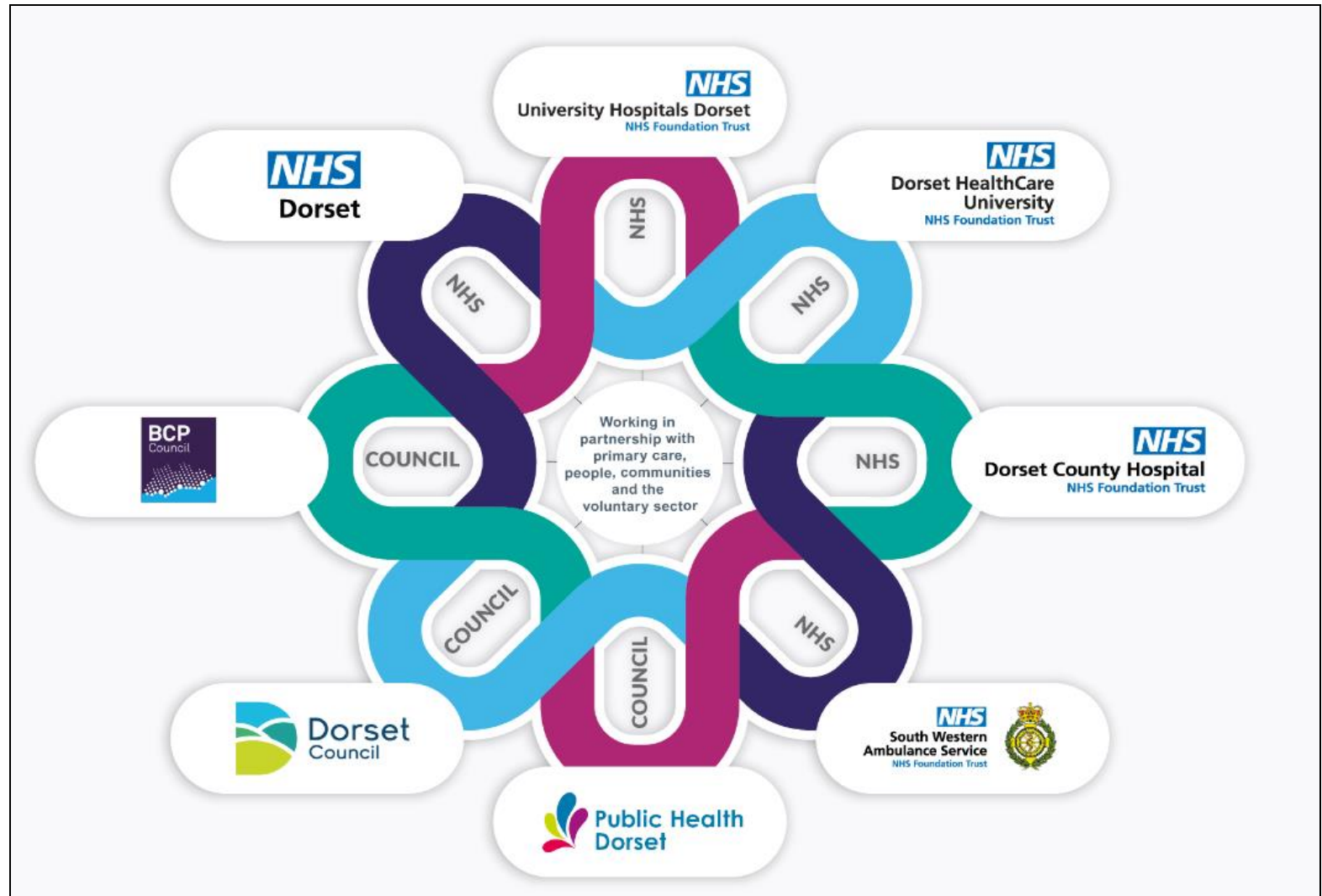


We are **caring** **one team** **listening to understand** **open and honest** **always improving** **inclusive**

Proud to be part of Our Dorset

“NHS Dorset will listen to people and communities across Dorset, see things from their perspective, and co-design the services that people really need going forward, so that we can support people to live healthy and happy lives from cradle to old age.”

Jenni Douglas-Todd
Chair, NHS Dorset



Dorset's vision: to be the healthiest place in England....



We will **improve** the lives of **100,000** people impacted by poor **mental health**.



We will prevent **55,000 children** from becoming **overweight** by 2040.



We will **reduce the gap** in healthy life expectancy from 19 years to **15 years** by 2043.



We will **increase** the percentage of older people living well and **independently** in Dorset.



We will add **100,000** healthy **life years** to the people of Dorset by 2033.

We are **caring** **one team** **listening to understand** **open and honest** **always improving** **inclusive**

Healthcare in Dorset is changing

- We are improving and reconfiguring our services
- We want to deliver high-quality, safe and sustainable care for our patients across our system, now organised by the Integrated Care Board
- This has been a clinically led process, redesigning pathways of patient care following a Clinical Services Review launched in October 2014 to examine how health and care organisations could be more effective
- Next few years will see major change in how and where care is delivered in Dorset

The NHS in Dorset has to change

We currently have good NHS services in Dorset. But we know we need to make significant changes to ensure you continue to have high quality, safe and affordable care both now and in the future. We want as many people as possible to live healthier lives for longer.

Our health needs are changing

The number of people living in Dorset is growing. And we'll have more people living longer with more long-term conditions like diabetes and dementia. This will increase demand for, and pressure on our health services.

At the same time fewer of us are suffering heart attacks, strokes or major accidents and if we do, we are more likely to survive. This is a good thing but puts pressure on the health and social care system.

Quality of care varies

Most patients generally receive good care but we know there are variations in quality. For example in 2014/15 we failed to meet the national standard for a maximum two-week wait for first outpatient appointment for patients referred urgently for suspected cancer by a GP.

We need to address this, so that everyone gets the same level of care. National quality standards are rising, we have to do more to make sure we continue to meet them.



Over 31,000 staff are employed in health and social care in Dorset but we face challenges in recruiting GPs, mental health nurses and emergency medical consultants. This shortage of staff could mean changes for some services.

Increasing numbers of people living with long term conditions



60% increase in registered diabetes patients aged 17+ in Dorset

2016 2020

Access to care

Most of the GP practices in Dorset have core opening hours between 8am and 6.30pm. Availability of extended hours appointments is highly variable with a large number of practices only providing extended hours on a 'one day or part week basis' and most practices are closed at weekends.

The money available for healthcare

The amount of money we have to spend on healthcare is increasing, but both demand and the cost of providing services is increasing faster. In Dorset we run the risk of overspending by around £433,000 every day by 2020/21.

It is important that we spend the money that we have more effectively. We want the biggest health gain for local people from every pound we spend.

£433,000 is roughly one third of the amount spent every day on running three acute hospitals.



Prevention is important

We also know that it will become increasingly important for people to stay well, avoid ill-health and better manage long-term conditions. To allow them to do this, we will need to make sure they have the right information and support in place. We have been working with our partners across Dorset to support the integration of health and social care, and direct increased funding towards early intervention and care planning.

This will be strengthened by integrated working across primary, community and hospital based services, multi-disciplinary team working, improving access to GPs, and delivering more care closer to home. To see what this would look like go to www.dorsetsvision.nhs.uk.

What will happen if we do nothing?

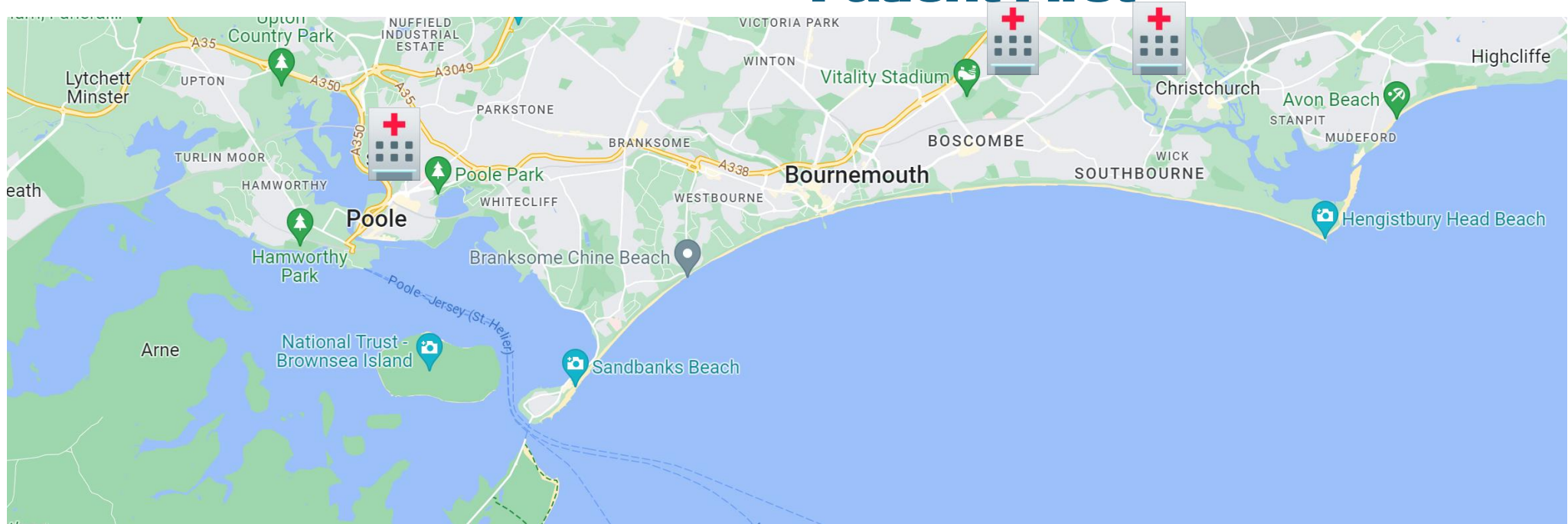
Staying as we are is not an option if we are to continue providing safe, high quality care for local people.

If we don't plan to do things differently then, because of staff shortages and insufficient money it is likely that local people will have more problems getting appointments, see an increase in demand but no increase in bed space, increasing number of sick patients but no increase in the number of staff to care for them, more operations being cancelled and potentially much more.

Most importantly, it would mean worsening health outcomes and survival rates. You can watch a short video explaining what will happen if we fail to change Dorset's health and care system on our website www.dorsetsvision.nhs.uk.

University Hospitals Dorset

- Improving care for patients
- Patient First



1100+ beds 

9,800 staff 

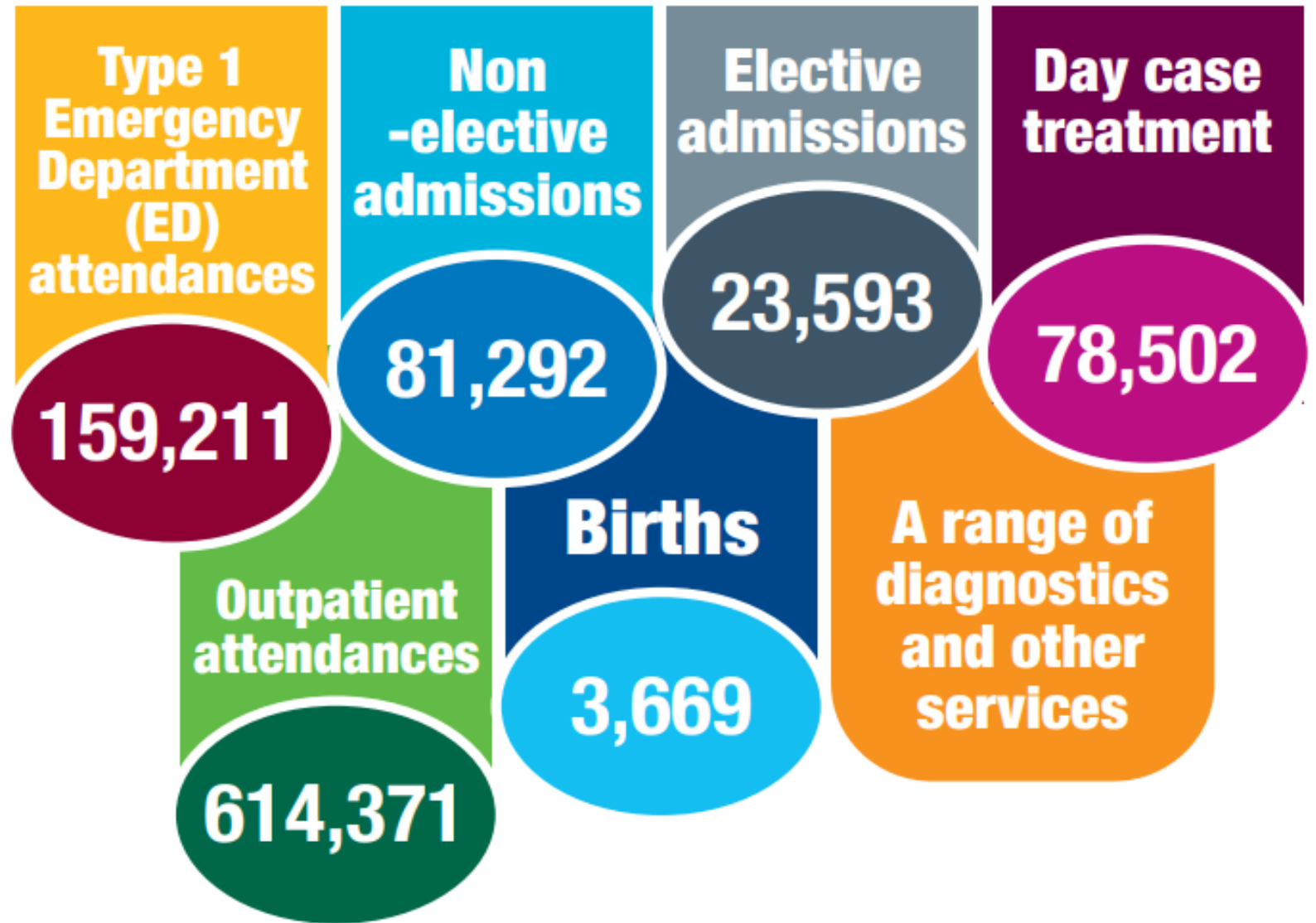
£840m 

University Status 

700k population 

We are **caring** **one team** **listening to understand** **open and honest** **always improving** **inclusive**

Last year UHD cared for...



Alongside caring for over 1100 people in hospital beds - 24/7, 365 days of the year

Already Achieved

Apr-May 23

Cardiology and stroke consolidated at Bournemouth

Jun 23

Poole 'bam' theatres open

Oct 23

Interim catering model at RBH
Diagnostics – Beales

Feb/Mar 24

New ward catering at RBH

Early moves complete

Phase 1

Mar 24

Pathology Hub opens

May/Jun 24

TIU, haem, surgical wards and stroke ward opens

Phase 1 complete

Planned & Emergency Separation Q3/4 25/26 (TBC) – Wards, modular and interim EPOC Complete
Bournemouth - Emergency Site
Poole - Planned Care Site

2024

Jun-Aug 2024

- Stour building complete
- Doctor's Mess complete

2025

Jan 25

- New access road - RBH

Jan-Mar 2025

- BEACH orientation & simulation training

Mar 25

- New Main Entrance and patient Visitor centre complete

BEACH complete

Q1 2025

4 Mar – RBH Radiology

25 March – RBH Critical Care move

2 April – Maternity/NICU move

14 May – RBH ED move

Oct 2025

Endoscopy
Diagnostic Hub complete – PHT

Nov 2025

Oncology & surgical
SDEC complete

Dec 2025

Shelley dining and staff area complete

2026

Q3 2026

Children's OP - RBH

Q2 2026 – Q2 2027

- Post-Op Surgical, EPOC, UTC - PHT
- AMU/RACE - RBH

2027

Reconfiguration Complete
Q2 – Q3 26/27
Poole Surgical Hub: 6 more theatres, admission & recovery complete

Reconfiguration Phases

Phase 2

BEACH

Mar-May 25

- BEACH Building
- Maternity, RBH ED and RBH CC

Phase 3

Planned & Emergency Separation

Q3/4 25 (TBC)

- Major Reconfiguration
- ED, Paeds - BEACH
- Medical - Modular wards
- Temporary EPOC

Phase 4

Reconfiguration Complete

Q3-Q4 26/27

- Theatres completion
- Final EPOC
- Final ward moves
- Electronic Health Record

Q1-2 2026

New ward catering at PHT

Electronic Health Record

- 2025- Business Case
- 2026/2027-Migration and Go-Live

Benefits of the Planned and Emergency Hospitals

Poole - Planned care hospital

- ✓ Focus on elective surgery, in improved theatre and recovery environment and efficient patient pathways.
- ✓ Fewer cancellations
- ✓ Shorter time to treatment
- ✓ More community diagnostics
- ✓ +Urgent treatment centre (UTC) 24/7

Across
UHD

- ✓ Better patient environments
- ✓ More sustainable services
- ✓ Recruit, retain and train staff
- ✓ More research & development

RBH - Emergency care hospital

- ✓ Full range of emergency services, 24/7, on one site
- ✓ Better quality and faster access to care
- ✓ Fewer patient transfers
- ✓ More same-day emergency care
- ✓ New maternity & children's units

Across
NHS

- ✓ Joining up information
- ✓ Co-ordinating teams
- ✓ More resilience for challenges now and for the future

We are **caring** **one team** **listening to understand** **open and honest** **always improving** **inclusive**

Poole becoming UK's largest planned care hospital by 2026

- 10 new operating theatres
- Ward refurbishments
- Brand new Endoscopy unit
- New diagnostics
- Enhanced post-op care

Keeping local services:

- 24/7 Urgent Treatment Centre for 111 and walk ins (as now)
- Clinics, diagnostics and cancer care



Improved patient
pathway and
experience

Reduced
cancellations,
shorter waiting
times

Improved day case
& inpatient
environment

Significant
reduction in
estates backlog

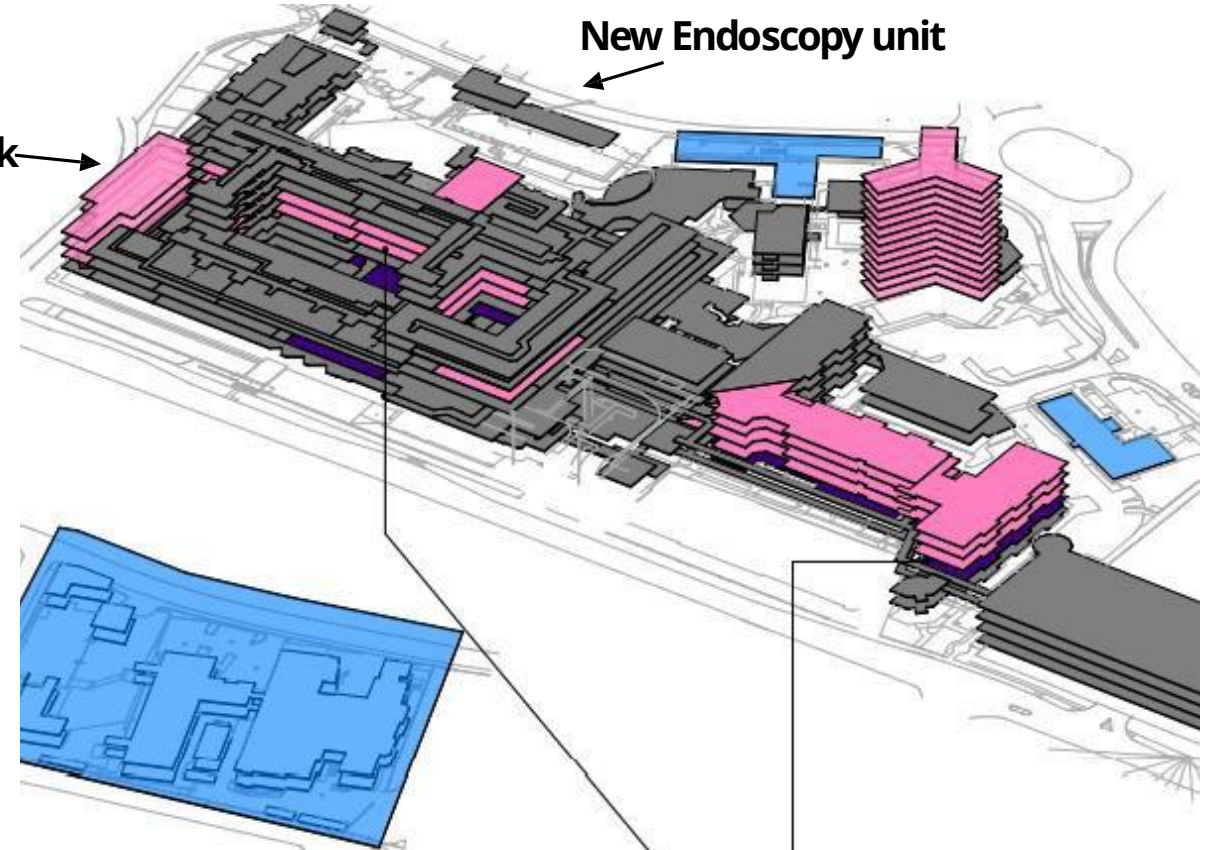
Specialist
rehabilitation
environments

We are caring one team listening to understand open and honest always improving inclusive

Poole end state: Planned hospital



New theatre block



Land released for key worker homes in central Poole

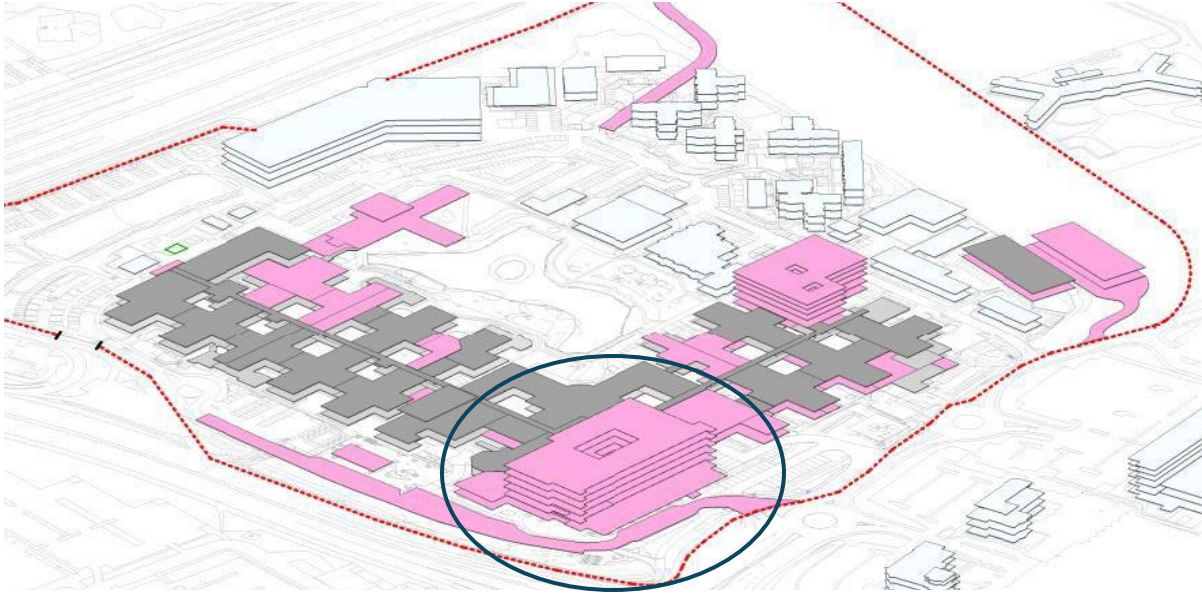
Major refurbishments

The new barn theatres - completed



Royal Bournemouth – The BEACH building

Standing for **B**irths, **E**mergency, **A**nd **C**ritical care, children's **H**ealth.



Emergency Hospital benefits include:

Quicker access to
24/7 expertise

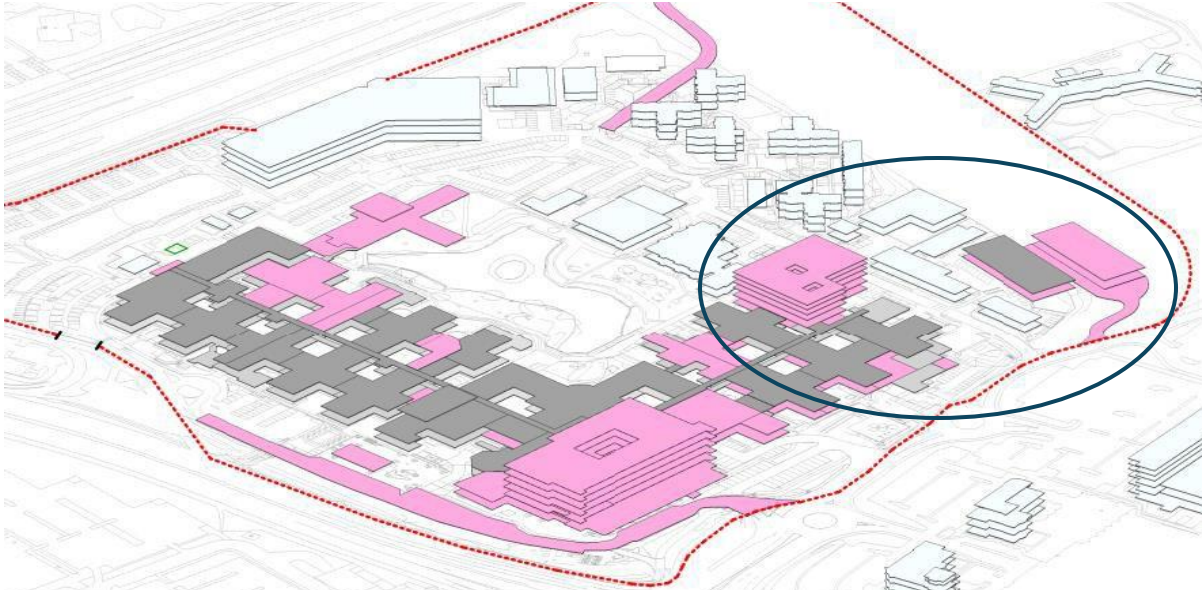
Better Same Day
Emergency Care

Better outcomes
for patients

Better patient
and staff facilities

We are **caring** **one team** **listening to understand** **open and honest** **always improving** **inclusive**

Royal Bournemouth – new ward building and pathology hub



New ward building - built
using modular construction
methods

Pathology hub bringing all
services for Dorset together
in one space



We are **caring** **one team** **listening to understand** **open and honest** **always improving** **inclusive**

*******Opening soon*******

Inside the BEACH (photos taken on 3 February)

- Babies will be born in the BEACH from April!
- Equipment is being delivered
- Inside the building is Almost finished
- Colleagues are undergoing sim training etc.
- Keys will be Handed to UHD in the next week or so



Exciting news for expecting parents - new maternity and neonatal unit at RBH

- A brand-new maternity and neonatal unit is set to open at the Royal Bournemouth Hospital's BEACH building.
- This state-of-the-art unit will replace the current facility at Poole Hospital, bringing the latest amenities and exceptional care to expecting parents in east Dorset.

We've launched a new marketing campaign, **'Born at the BEACH'**, to keep the public informed leading up to the opening in April 2025.



What to Expect:

- A new modern maternity unit - spacious rooms, with wonderful views over Dorset
- Large antenatal clinic - vaccinations for pregnancy can be given on site.
- Bigger cot spaces on NICU - larger than in the current building
- Extra maternity triage assessment rooms - creating a more stream-lined service
- Mainly with side-rooms - meaning a support person will be able to stay on site 24/7.
- Infant feeding rooms - available throughout the hospital for staff and families.
- Improved facilities - the BEACH will have a large multi-faith area as well as shop and coffee bar for treats and refreshments

Our exciting future is underway...

Million pound upgrade for stroke services



- Our enhanced stroke unit now has a 20% capacity increase, with 43 beds
- Consolidating services in one location has improved staff flexibility, efficiency, and treatment times
- Patients from Poole and Purbeck are receiving life-saving care about three times faster, with notable improvements already seen

New cardiology hub - boosting care, saving lives



- All inpatient cardiology services now centered at the Royal Bournemouth
- Changes are improving patient care, reducing heart attack and stroke risk, and saving lives - quicker treatment is potentially saving 17 to 29 lives each year
- Cardiology consultants and some outpatient services will remain at Poole Hospital

Building for the future

As our transformation progresses and we enter a busy new year, we look forward to exciting developments across our hospital sites. This £500m investment will ensure that patients receive the right care, in the right place, at the right time.

We recognise that delivering these improvements while maintaining high-quality care is a significant challenge. Thank you to all our staff for your dedication, flexibility, and support in ensuring services continue to run smoothly throughout this period of change.

Key milestones in 2025

January/February

- Wessex Way access road to RBH completes. Taking traffic volumes away from local roads and improving access to the site for pedestrians and cyclists.



February

- BEACH Building 'keys' handed over to UHD.
- The Coast Building reaches its 'topping out' milestone. A £91m state-of-the-art ward and catering block, that will expand patient capacity and services.



March

- RBH Radiology ED Hub relocates to the BEACH Building (4 March).
- RBH Critical Care Unit moves into the BEACH Building (25 March). Starting the move of our clinical teams into our new facility.



April

- Maternity and Neonatal teams move into the BEACH Building (2 April). Replacing the current maternity facility at Poole Hospital the new unit will offer everything parents need for a smooth journey from pregnancy to birth and beyond.
- The new RBH main entrance, retail, and multi-faith areas open.
- Inter-site shuttle bus between Poole and RBH begins.



Spring 2025

- Expansion of the Outpatient Assessment Centre at the Dolphin Centre, Poole (subject to business case approval).
- New car park operator introduces an Automatic Number Plate Recognition system, along with an improved staff parking permit system. Enhancing security, reducing unauthorised parking, and streamlining staff access for a smoother experience.

May

- RBH Emergency Department relocates to the Beach Building (14 May).
- Potential move of RBH Ward 18.



Summer 2025

- Work begins on upgrades to the RBH Acute Medical Unit (AMU), Medical and Frailty Same Day Emergency Care (SDEC), and Older Persons Assessment Unit (OPAU).

Autumn 2025

- Endoscopy Diagnostic Hub at Poole completed. Enabling us to treat more patients, reduce waiting times and enhance patient experiences.
- Surgical Same Day Emergency Care (SDEC) and Surgical Admissions Unit (SAU) completed at RBH.
- New Haematology and Oncology wards completed at RBH.



Winter 2025

- RBH Shelley Restaurant and new staff dining area completed.
- The Coast Building fully completed.
- Planned and emergency services separation: Emergency care moves to RBH, while Poole becomes the planned care hospital, including the Elective Surgical Hub.

“ In 2025, our new buildings will come to life as we welcome the first patients.

“ The opening of the Maternity Unit in the Beach Building at RBH and the new Endoscopy Diagnostic Hub at Poole mark key steps in our journey to improve patient care.

“ All developments planned this year support our long-term strategy to separate emergency and planned treatments, enhancing services for both staff and patients across all our sites.

“ Thanks you for your commitment to delivering excellent care while we are building for the future. ”



Dr Isabel Smith
Medical Director, Strategy
and Transformation



In summary...

- This is an exciting time for staff and patients across Dorset, as we work together to take forward our transformation journey
- All our plans are part of the vision for improving services and outcomes for local residents, outlined in the Dorset Clinical Services Review
- These are hugely complex projects and we are trying to minimise disruption to current services during the construction phase - we are grateful for the investment and support of our colleagues and patients at this time
- The change in the way services are provided will be beneficial to the public, saving lives and delivering better care in improved facilities, future-proofing healthcare for the expanding population of Dorset